

FEATURES

- Solenoid valves satisfy all relevant EC directives
- Special resilient materials and handling procedures are used in the high vacuum valves to avoid molecular contamination
- The medium and high vacuum valves listed in this bulletin are mass spectrometer tested
- Valves do not require a minimum operating pressure and are suitable for low, medium and high vacuum
- Valve operation is not affected by mounting position

GENERAL

Differential pressure 1 bar absolute [1 bar = 100 kPa]
Response times 5 - 25 ms

fluids (*)	temperature range (TS)	sealings (*)
air, inert gas	-20 to +90°C	NBR (nitrile / buna-n) FPM (fluorelastomer / viton)

MATERIALS IN CONTACT WITH FLUID

(*) Ensure that the compatibility of the fluids in contact with the materials is verified

Body	Brass
Core tube	Stainless steel
Core and plugnut	Stainless steel
Spring	Stainless steel
Seat	Brass
Sealings	NBR or FPM
Disc	NBR or FPM
Shading coil	Copper

ELECTRICAL CHARACTERISTICS

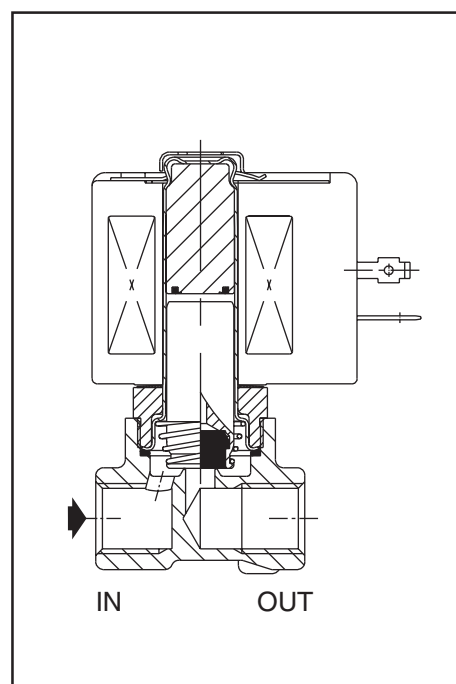
Coil insulation class F
Connector Spade plug (Pg 11P)
Connector specification ISO 4400
Electrical safety IEC 335
Standard voltages DC (=) : -
(Other voltages and 60 Hz on request) AC (~) : 24V - 115V - 230V / 50 Hz

coil type	power ratings				ambient temperature range (TS)	protection
	inrush	holding		=		
	(VA)	(VA)	(W)	(W)	(°C)	
CM6-FT	34,0	15,6	6,0	-	-20 to +75	moulded IP65

SPECIFICATIONS

pipe size	orifice size	flow coefficient Kv		maximum operating pressure differential vacuum range (PS)	coil type	catalogue number
				air (*)		
G	(mm)	(m³/h)	(l/min)	mbar (Torr)	~	
Low vacuum range to 25 Torr, NBR resilients						
1/4	7,1	0,82	13,7	33,3 (25)	CM6-FT	SC G262C090
Medium vacuum range to 10⁻³ Torr, NBR resilients						
1/4	7,1	0,82	13,7	1,33 · 10 ⁻³ (10 ⁻³)	CM6-FT	SC G262C090VM
High vacuum range to 10⁻⁶ Torr, FPM resilients						
1/4	7,1	0,82	13,7	1,33 · 10 ⁻⁶ (10 ⁻⁶)	CM6-FT	SC G262C090 VH

 The codes in the grey shaded areas correspond to commonly used products which can be supplied rapidly



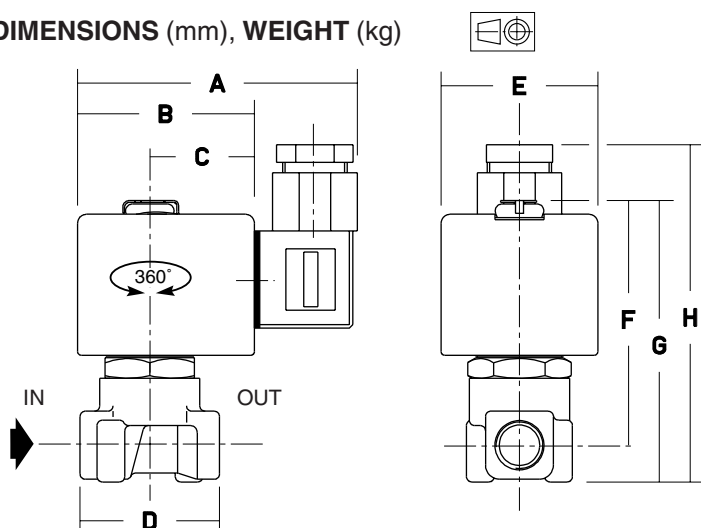
OPTIONS

- Waterproof enclosure with embedded screw terminal coil and Pg 13,5 cable gland to meet CEE-10 (IP 67)
- Explosionproof enclosures for hazardous locations according to "**CENELEC**" and national standards (see section 10)
- Explosionproof and watertight enclosures according to "**NEMA**" standards (see section 10)
- Compliance with "**UL**" and "**CSA**" standards
- Mounting brackets
- Manual operator
- Plug with visual indication and peak voltage suppression or with 2m cable length (see section 11)

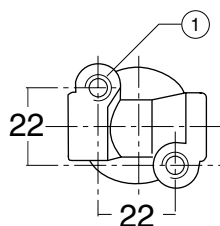
INSTALLATION

- The valves can be mounted in any position without affecting operation
- Valves have 2 mounting holes in body
- Threaded pipe connection is standard: G (ISO 228/1)
- The third digit in the catalogue number indicates the standard pipe connection
- Other pipe connections are available on request
- Installation/maintenance instructions are included with each valve
- Spare Parts Kit and replacement coils are available (see section 11)

DIMENSIONS (mm), WEIGHT (kg)



BOTTOM VIEW BODY



① 2 mounting holes M4, 6 mm depth

catalogue number SC G262	A	B	C	D	E	F	G	H	weight (1)
C090	75	45	27	40	39	65	75	92	0,35

(1) incl. coil and connector